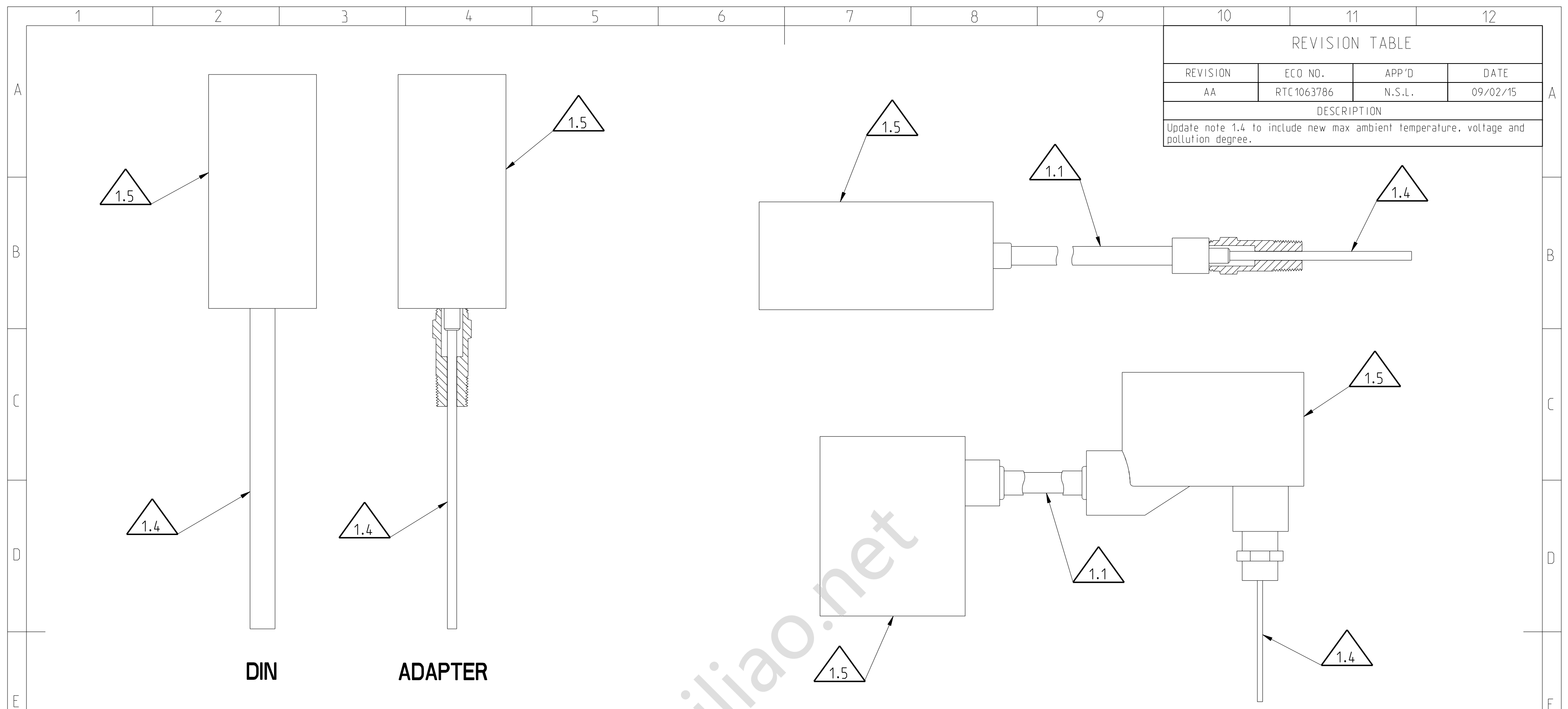


REVISION TABLE			
REVISION	ECO NO.	APP'D	DATE
AA	RTC1063786	N.S.L.	09/02/15
DESCRIPTION			
Update note 1.4 to include new max ambient temperature, voltage and pollution degree.			



EXPLOSIONPROOF DIRECT MOUNT CONFIGURATIONS

EXPLOSIONPROOF REMOTE MOUNT CONFIGURATIONS

1.4. ROSEMOUNT 214C TEMPERATURE SENSORS, ASSEMBLIES AND ACCESSORY HARDWARE APPROVED FOR THE FOLLOWING HAZARDOUS LOCATIONS:
 EXPLOSIONPROOF: CLASS I, DIV. 1, GROUPS B, C, D
 DUST IGNITIONPROOF: CLASS II & III, DIV. 1, GROUPS E, F, G
 MAXIMUM AMBIENT TEMPERATURE T5: 95°C
 TYPE 4X IP66
 Vmax = 35VDC
 POLLUTION DEGREE 4

- 1.3. COMPONENTS MUST BE APPROVED FOR GAS GROUP APPROPRIATE TO AREA CLASSIFICATION.
- 1.2. ALL CONDUIT THREADS TO BE ASSEMBLED FIVE FULL THREADS ENGAGED MINIMUM.
- 1.1. WIRING METHOD SUITABLE FOR CLASS 1, DIV 1, ANY LENGTH. SEAL NOT REQUIRED.

1.5. CERTIFIED EXPLOSIONPROOF APPROVED ENCLOSURE WITH OR WITHOUT A TRANSMITTER, MAXIMUM FREE VOLUME 550CC.

NOTES:

DRAWING NO. 00214-1030

CONFIDENTIAL AND PROPRIETARY INFORMATION IS CONTAINED HEREIN AND MUST BE HANDLED ACCORDINGLY. ROSEMOUNT		SURFACE FINISH UNLESS OTHERWISE SPECIFIED	3RD ANGLE	SIZE C	SCALE N/A	REV AA
UNLESS OTHERWISE SPECIFIED DIMENSIONS IN INCHES (mm). REMOVE ALL BURRS AND SHARP EDGES.		ROSEMOUNT® Process Management 8200 Market Boulevard - Chanhassen, MN 55317 USA				
-DEC TOLERANCES- .X ± .1 [2.5] .XX ± .02 [0.5] .XXX ± .010 [0.25]		TITLE 214C HAZLOC INSTALLATION DRAWING				
FRACTIONS ± 1/32 ANGLES ± 2°		DR. J. COTA 04/15/15		DRAWING NO. 00214-1030		
DO NOT SCALE PRINT		CAD MAINTAINED. (PRO/E)		PRODUCT CODE		DOC TYPE - SHEET 1 OF 1